

Delfi COM Icons Version 2 V.1.0.0.0

Rev. 38a

Input-files: All input files must be in Windows-1252 encoding

Download Input examples at: <http://dci.delfi.com/Help>

Name: ItemNo.txt

Fixed Length
Left alignment
Alphanumeric sorted

ItemNo[30] Description[30] Location[20] Quantity[10] Serialrequired(0/1)[1]

Name: EmployeeID.txt

Fixed Length
Left alignment
Alphanumeric sorted

EmployeeID[20] Description[30] Description_2[30]

Name: ItemReference.txt

Fixed Length
Left alignment
Alphanumeric sorted

ItemReference[30] ItemNo[30]

Name: PurchaseNo_<PurchaseNo>.txt

Fixed Length
Left alignment
Alphanumeric sorted

ItemNo[30] Description[30] Quantity[10] LocationNo[20]

Name: Order_<OrderNo>.txt

Fixed Length
Left alignment
Alphanumeric sorted

ItemNo[30] LocationNo[20] Description[30] Quantity[10]

Name: CustomerNo.txt

Fixed Length
Left alignment
Alphanumeric sorted

CustomerNo[20] Description[30]

Name: InventoryList.txt

Fixed Length
Left alignment
Alphanumeric sorted

ItemNo[30] Description[30] LocationNo[20] Quantity[10]

Name: SerialNo.txt

Fixed Length
Left alignment
Alphanumeric sorted

SerialNo[30] ItemNo[30] Description[30]

Name: Location.txt

Fixed Length
Left alignment
Alphanumeric sorted

Location[20]

Name: Price.txt

Fixed Length
Left alignment
Alphanumeric sorted

ItemNo[30] Price[10] Currency[10]

Name: SupplierNo.txt

Fixed Length
Left alignment
Alphanumeric sorted

SupplierNo[30] Description[30]

Name: GlobalEmployeeID.txt

Fixed Length
Left alignment
Alphanumeric sorted

EmployeeID[20] Description[30] Description_2[30] Password[10] Usergroup[10]

OUTPUT FILES

OUTPUT FILE – Menu: Pick

Name: PickGoods.txt (if use verify order:

PickGoods_<OrderNo>.txt)

Variable Length

Left alignment

Comma separated

OrderNo, Location, ItemNo, SerialNo, Quantity, DateTime
(dd-mm-yy HH:MM:SS), EmployeeID

Example:

123323,22222,23232323,,7,28-10-15 09:25:50,2
331232321,22222,132131412,8888,1,28-10-15 09:25:50,

OUTPUT FILE – Menu: Receive

Name: Received.txt (if use purchaseNo:

Receive_<PurchaseNo>.txt)

Variable Length

Left alignment

Comma separated

PurchaseNo, ItemNo, Quantity, DateTime (dd-mm-yy
HH:MM:SS), EmployeeID, SerialNo, Location

Example:

222222,4444444,7,28-10-15 09:25:50,MJU,1234,LOC
123512,124512,7,29-10-15 09:25:50,MJU,,LOC

OUTPUT FILE – Menu: Create Order

Name: CreatedOrders.txt

Variable Length

Left alignment

Comma separated

CustomerNo, Location, ItemNo, SerialNo, Quantity, DateTime (dd-
mm-yy HH:MM:SS), EmployeeID

Example:

1111111,2222222,4444444,,7,28-10-15 09:25:50,
1111111,331232321,132131412,88888,1,28-10-15 09:25:50,DHL

OUTPUT FILE – Menu: Restock

Name: Restock.txt

Variable Length

Left alignment

Comma separated

EmployeeID, SupplierNo,Location, ItemNo, Quantity, DateTime (dd-mm-yy HH:MM:SS)

Example:

CCC,4444,Shelf 2,5704416403114,22,14-06-2016 13:54:43

OUTPUT FILE – Menu: Inventory

Name: Inventory.txt

Variable Length

Comma-separated

ItemNo, SerialNo, Location, Quantity, DateTime (dd-mm-yy
HH:MM:SS), EmployeeID

Example:

70222522,,12234234234,3,23-03-12 08:14:01,
80748700,22222,12312312,1,23-03-12 08:56:06,2
4050300580111,,12312,321,23-03-12 16:22:49,MDM

OUTPUT FILE – Menu: Move

Name: MoveGoods.txt

Variable Length

Left alignment

Comma separated

ItemNo, ToLocation, FromLocation, Quantity,
DateTime (dd-mm-yy HH:MM:SS), EmployeeID, Serial No

Example:

12332366,23232323,4444444,3,28-10-15 09:25:50,,
331232321,123,4454534,4,28-10-15 09:25:50,DHL,

OUTPUT FILE – Menu: Consume

Name: Consumed.txt (if use verify order:

Consume_<OrderNo>.txt)

Variable Length

Left alignment

Comma separated

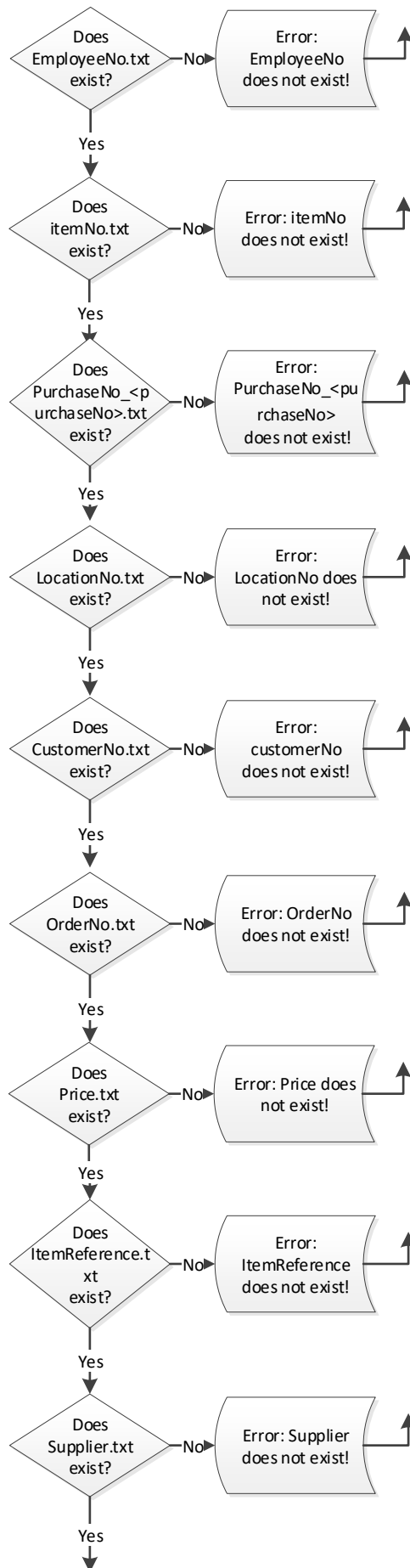
OrderNo, Location, CustomerNo, ItemNo, SerialNo,
Quantity, DateTime (dd-mm-yy HH:MM:SS), EmployeeID

Example:

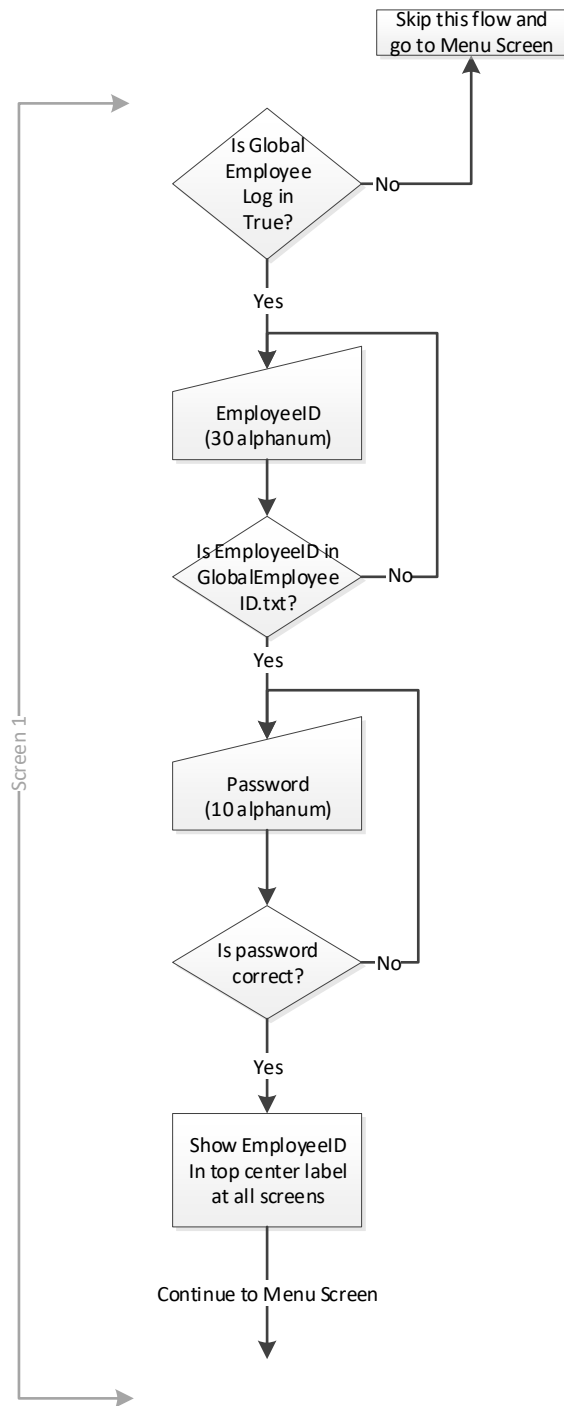
11111,2222222,555,4444444,,7,28-10-15 09:25:50,4
11111,331232321,555,132131412,,1,28-10-15 09:25:50,

STARTUP FLOW

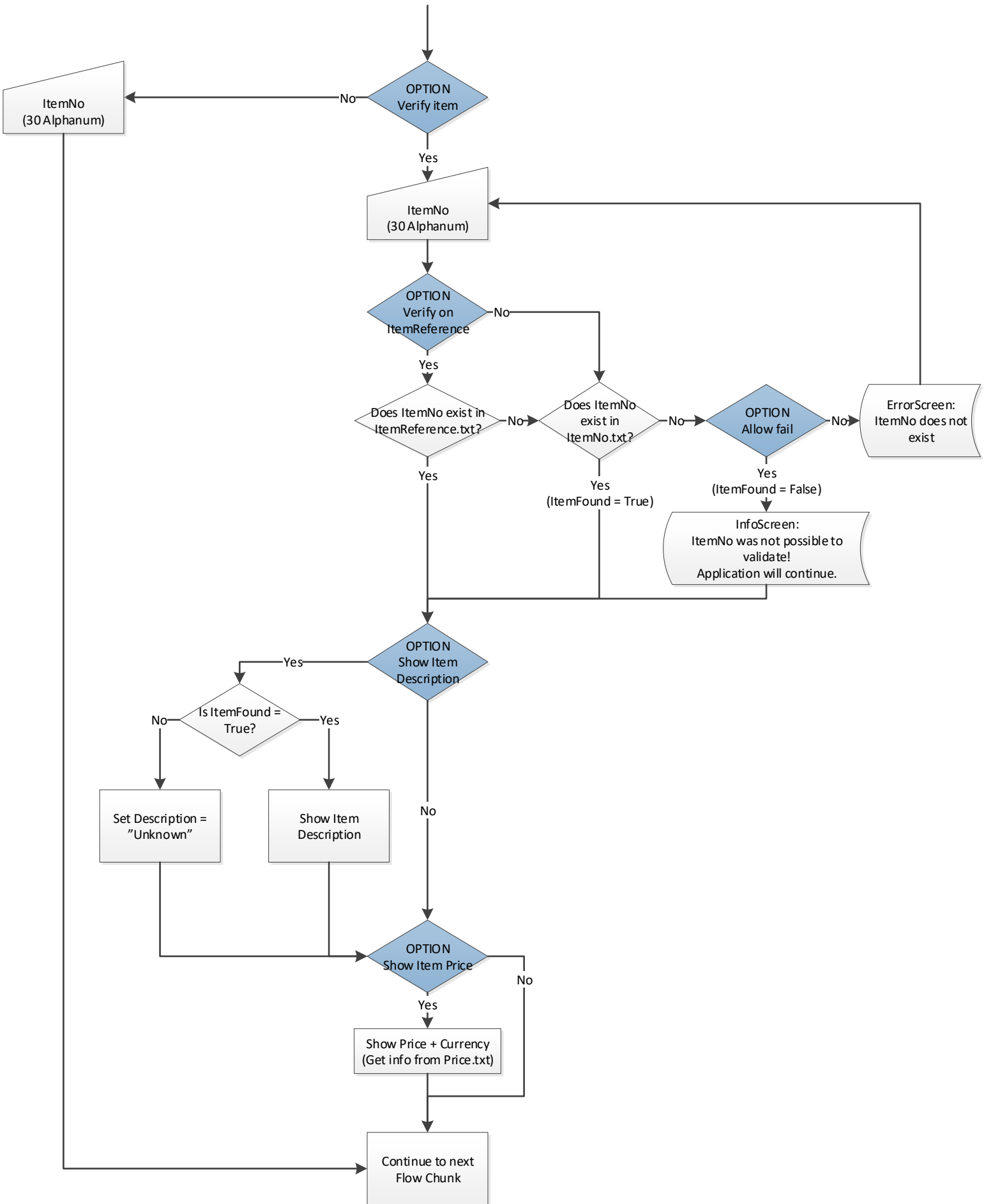
If verify settings are enabled it is checked at start of module if the files are present.



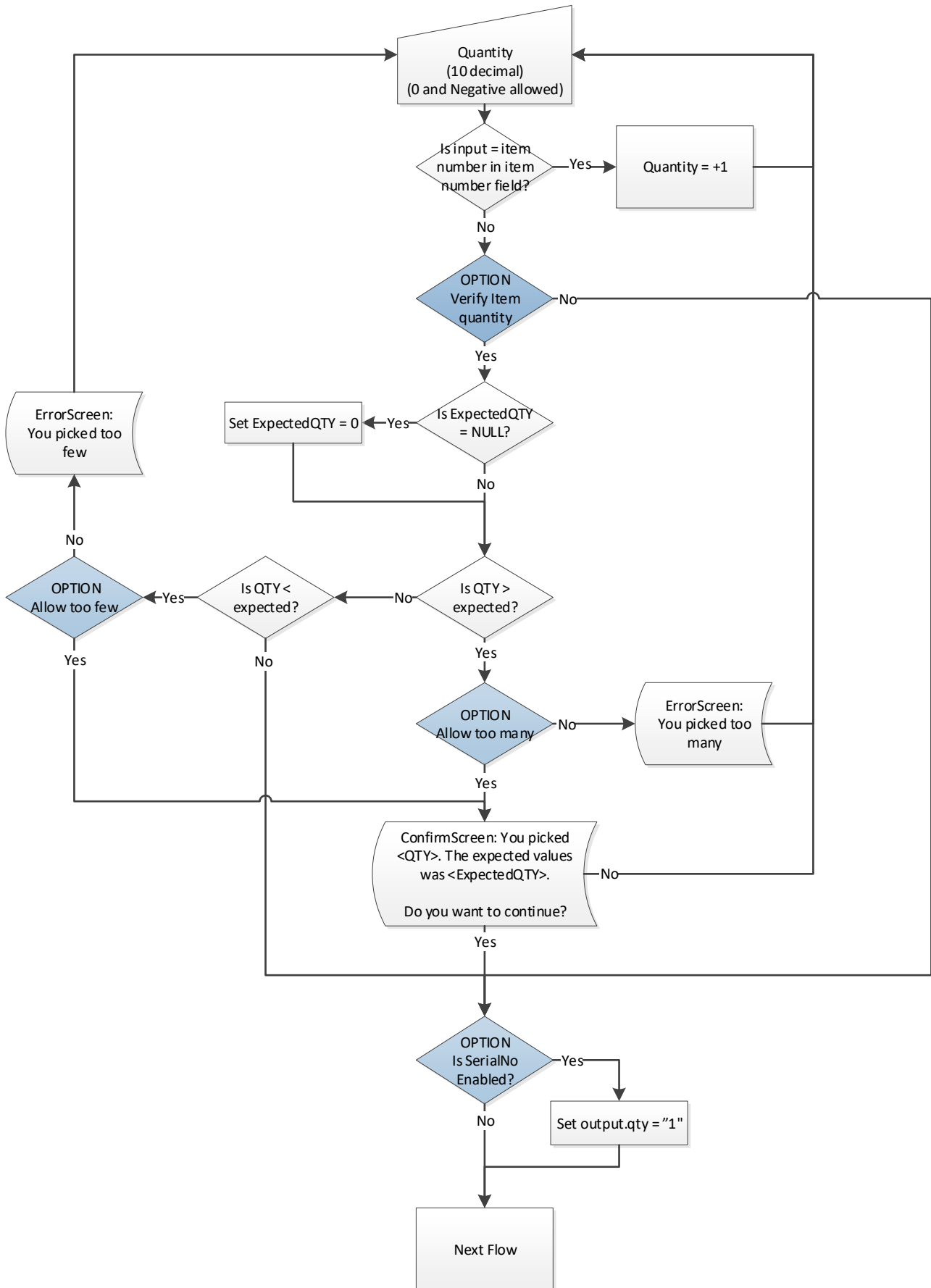
Global Employee Login



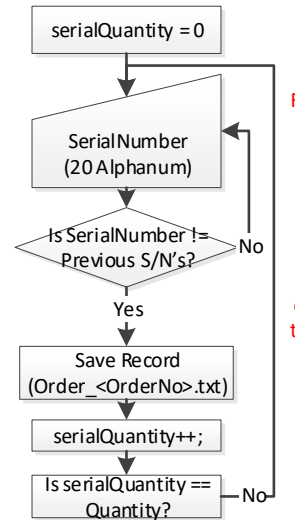
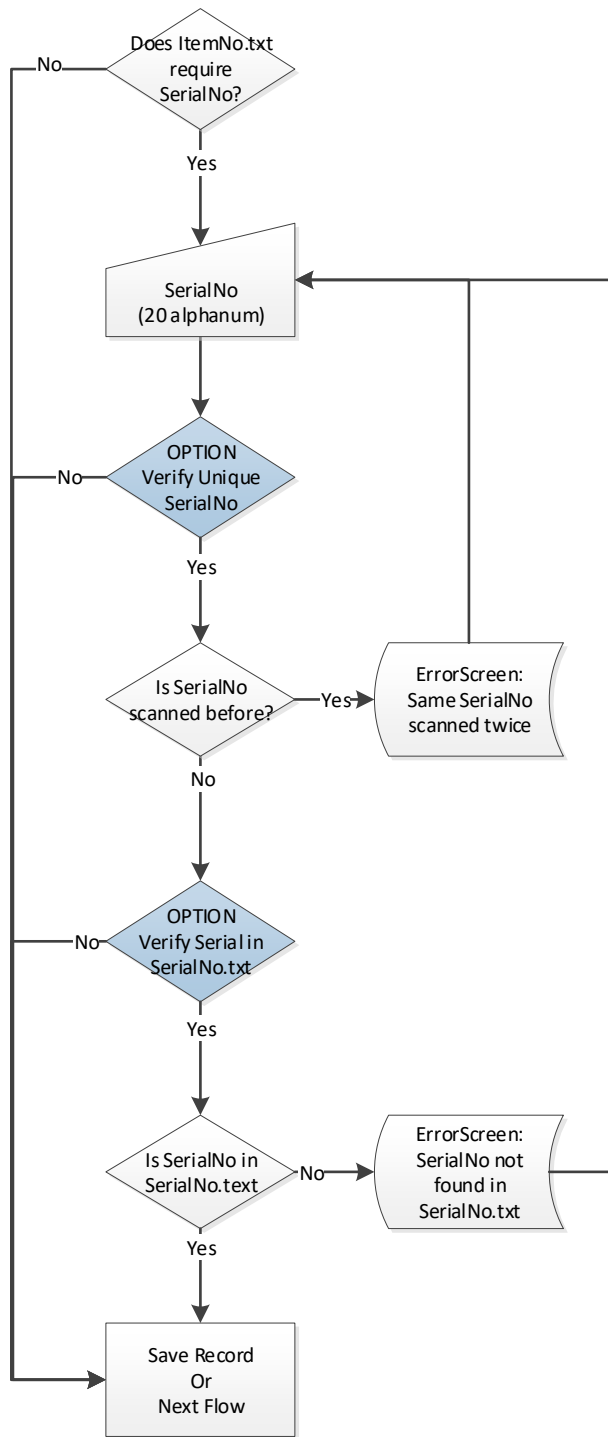
ITEM FLOW



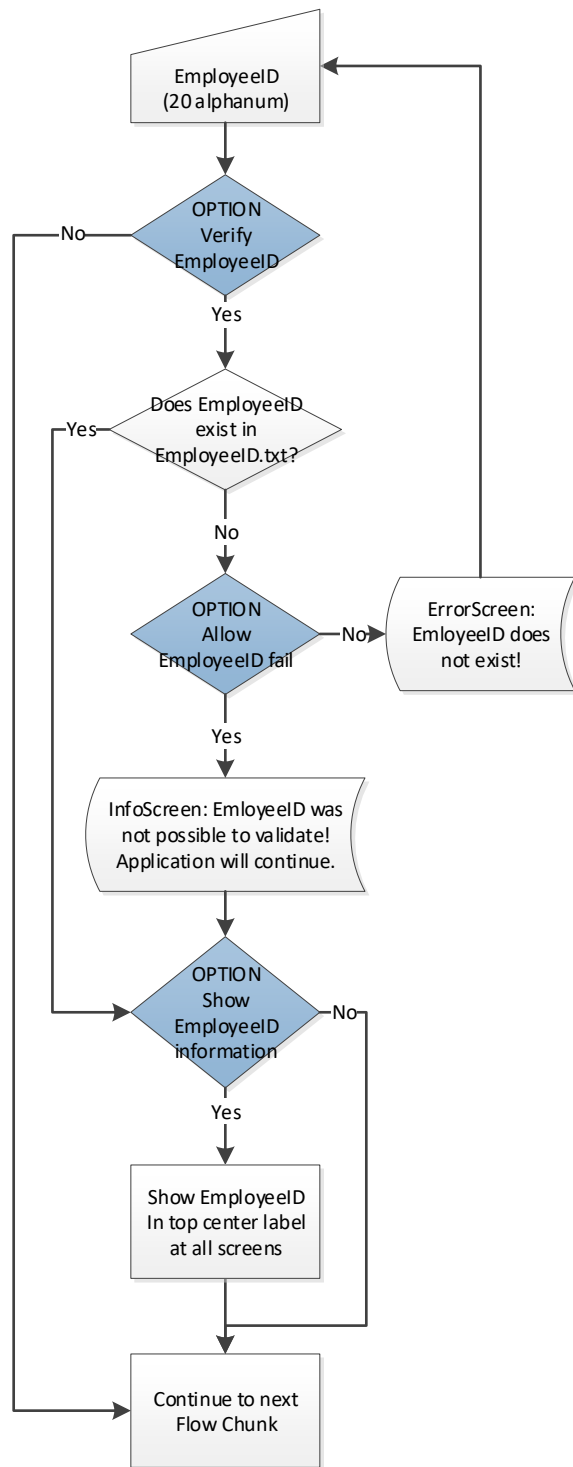
QUANTITY FLOW



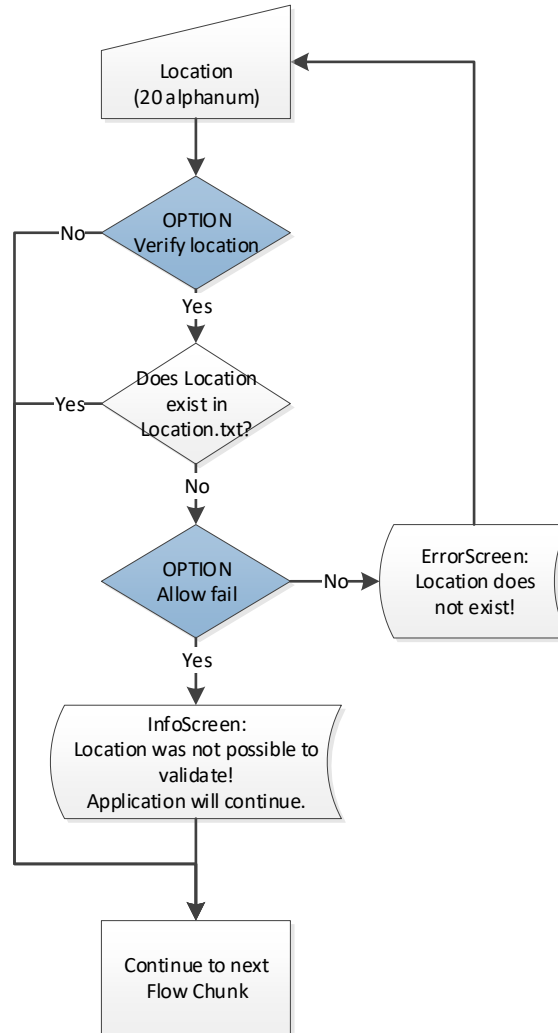
Serial FLOW



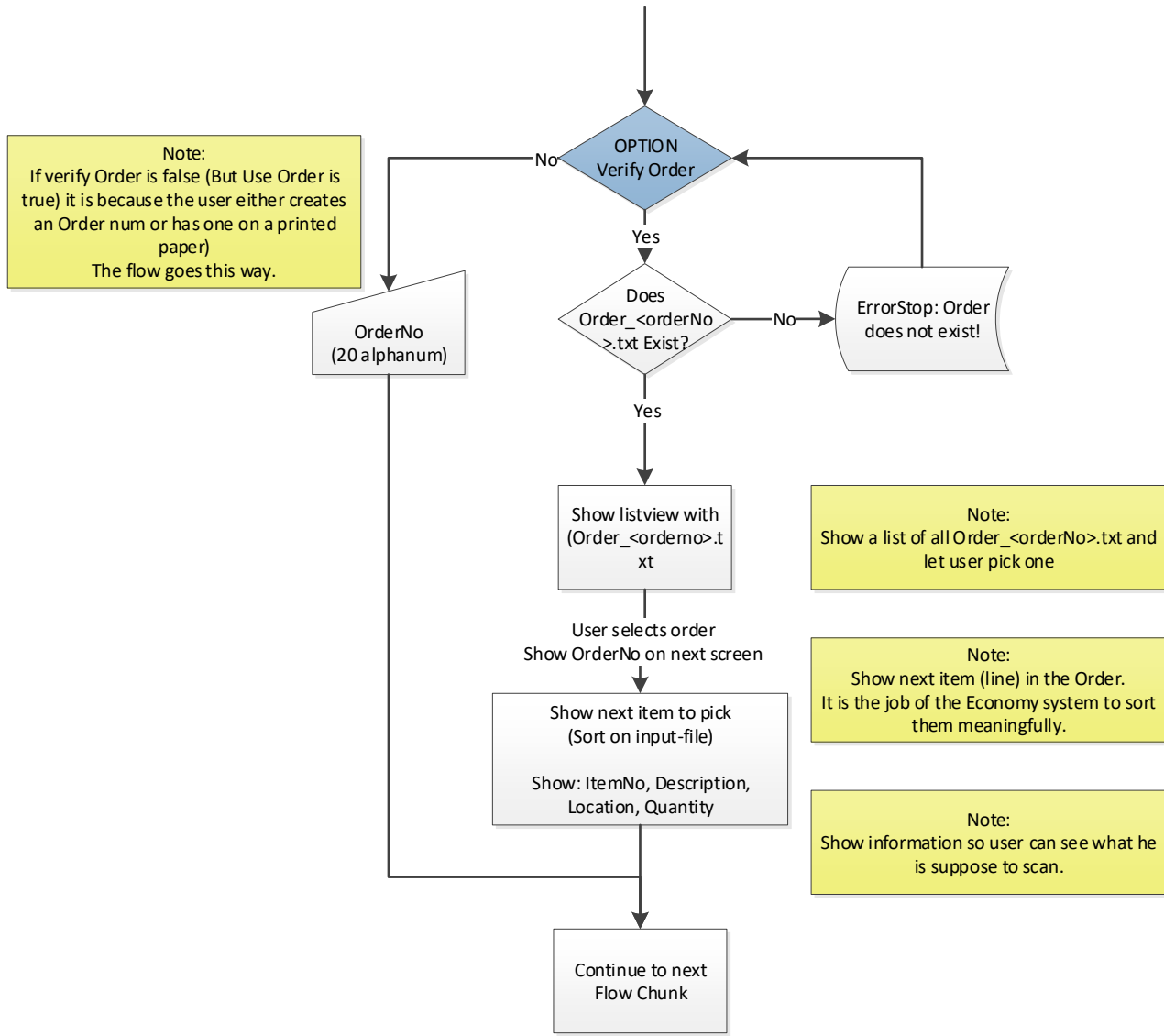
EMPLOYEE ID FLOW



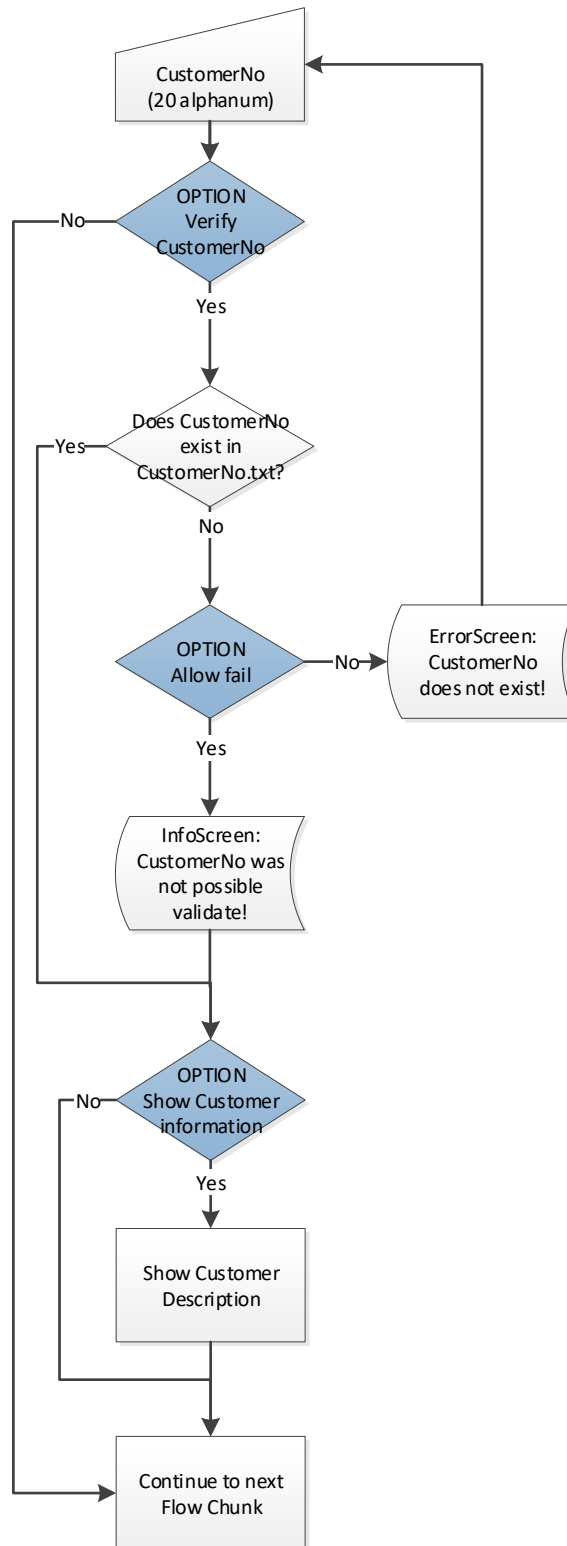
LOCATION FLOW



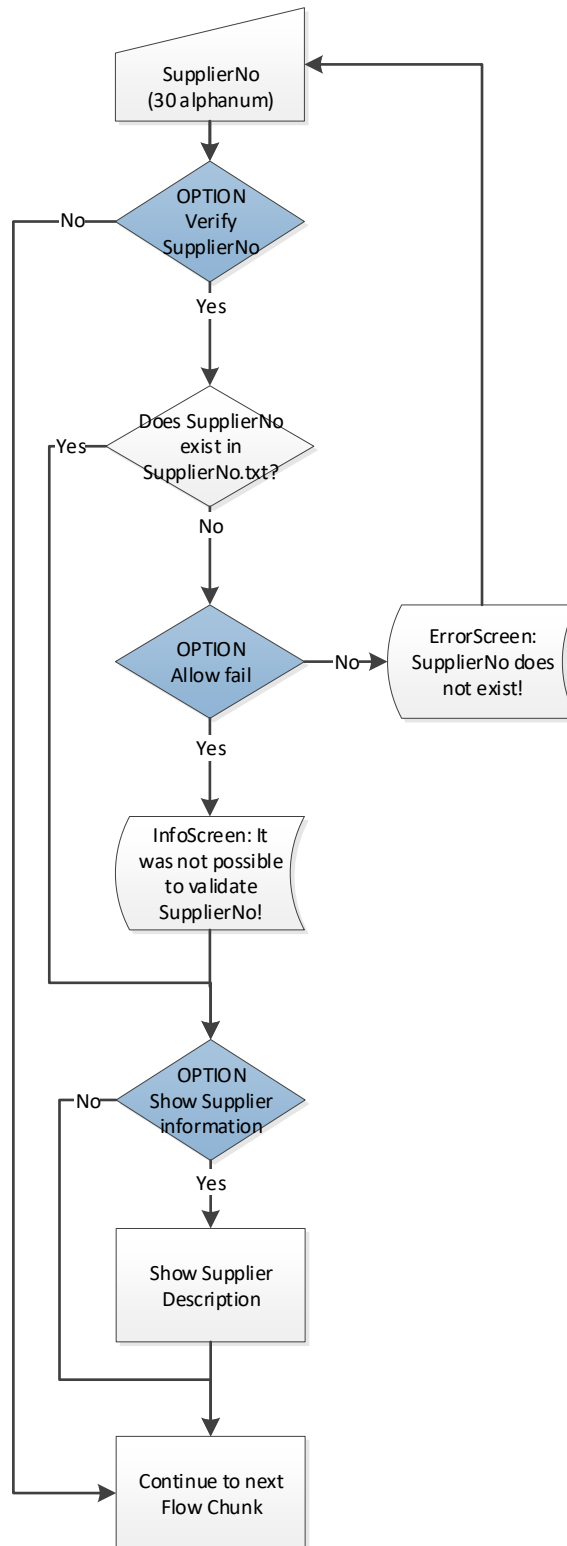
ORDER FLOW



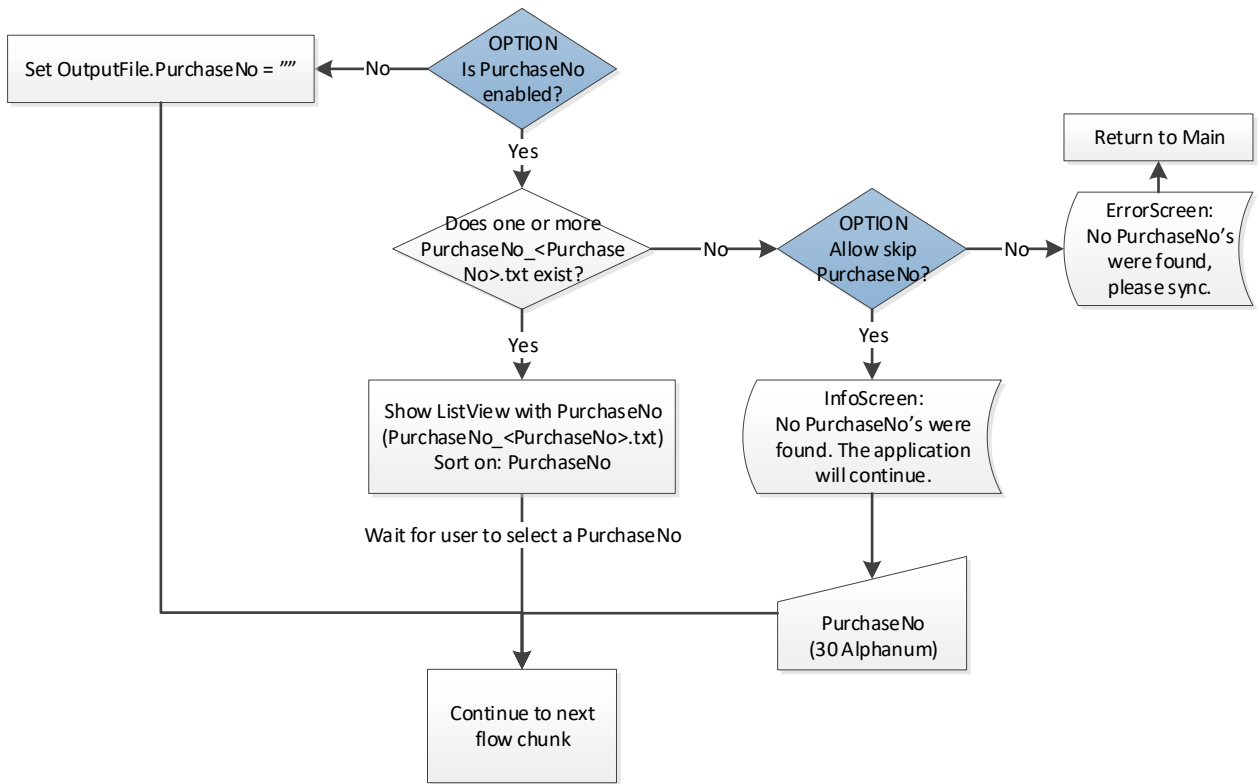
CUSTOMER FLOW



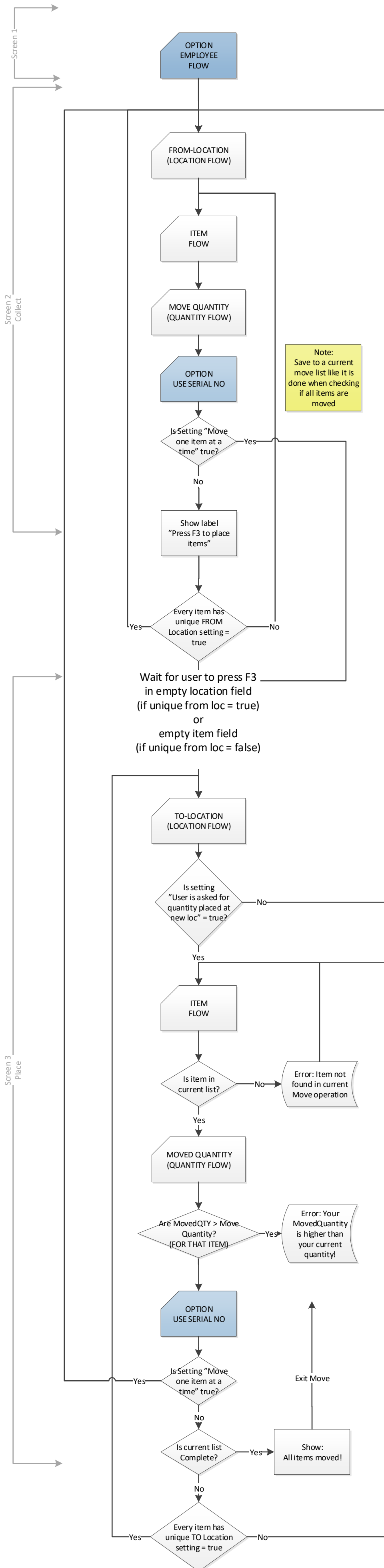
SUPPLIER FLOW



PurchaseNo FLOW



MOVE FLOW



Note: Save to a current move list like it is done when checking if all items are moved

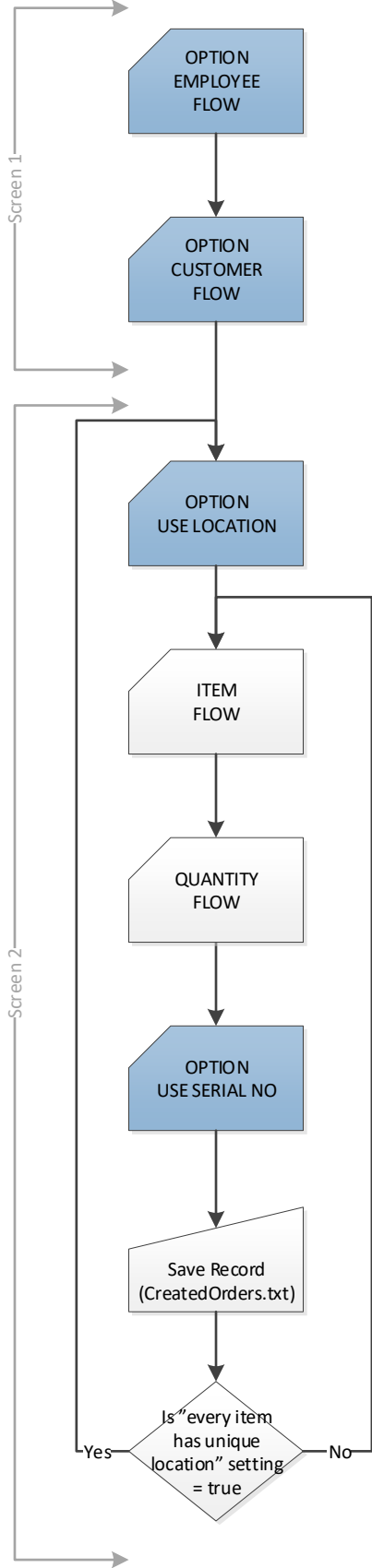
Note: Current app allows placing item(s) in more locations We need this in flow too

Screen 1

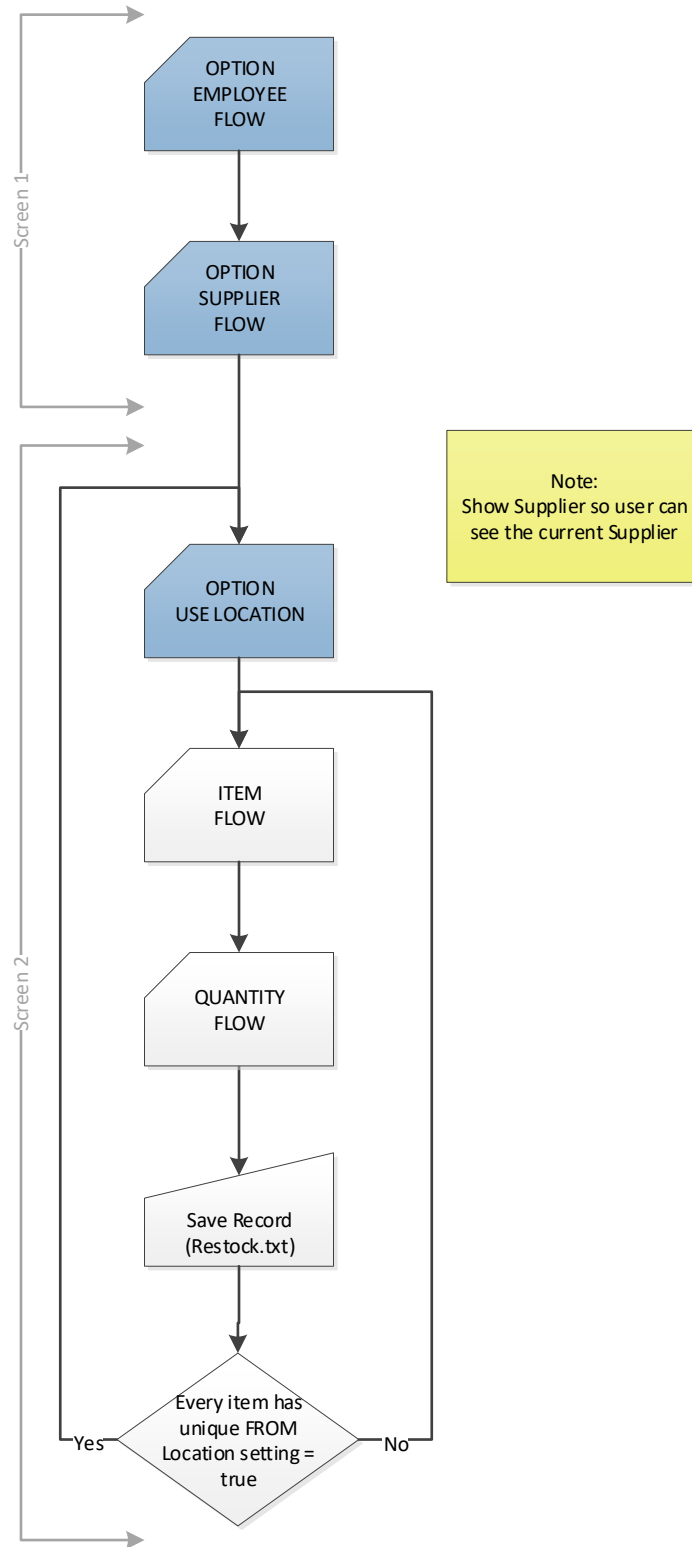
Screen 2 Collect

Screen 3 Place

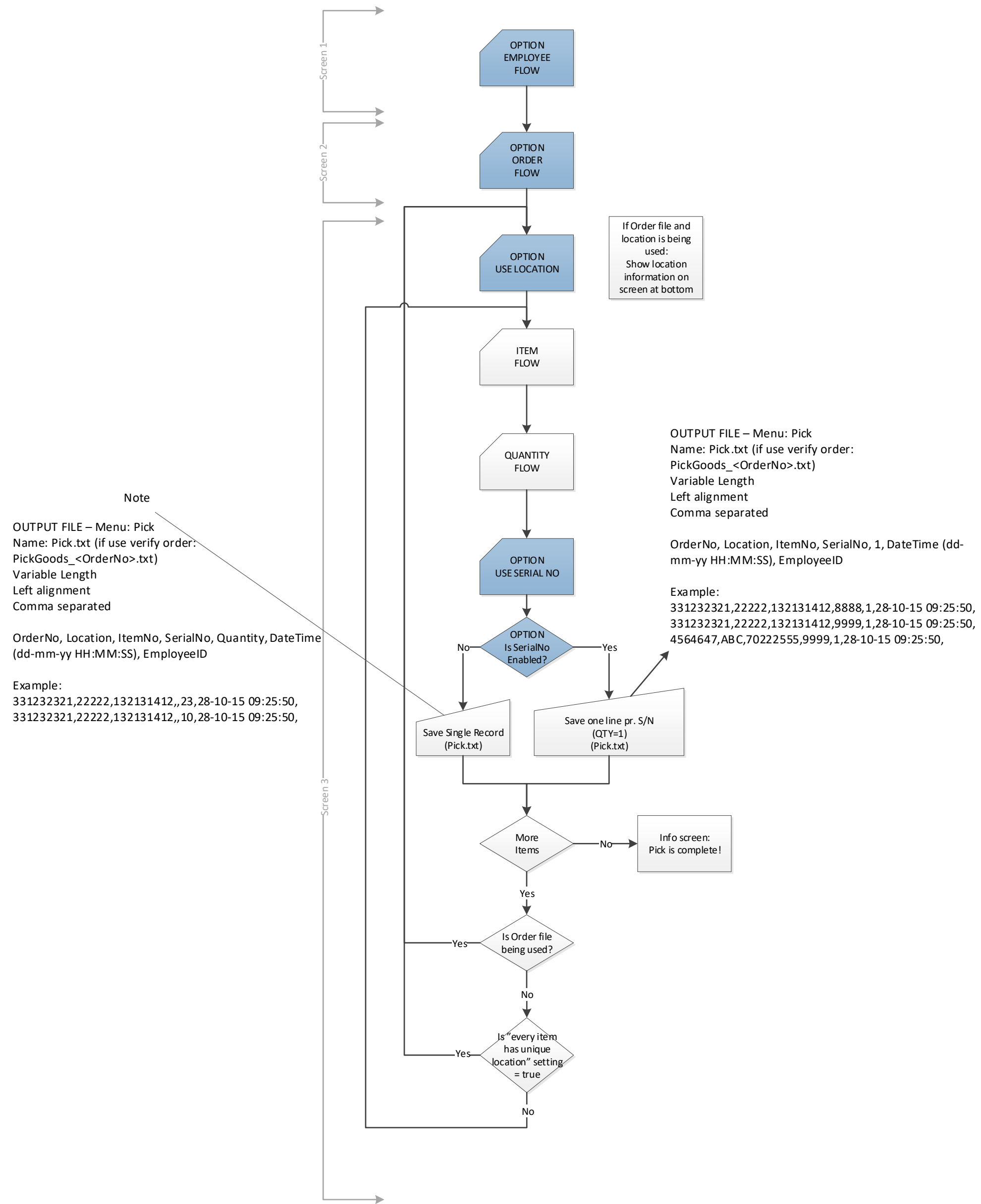
CREATE ORDER FLOW



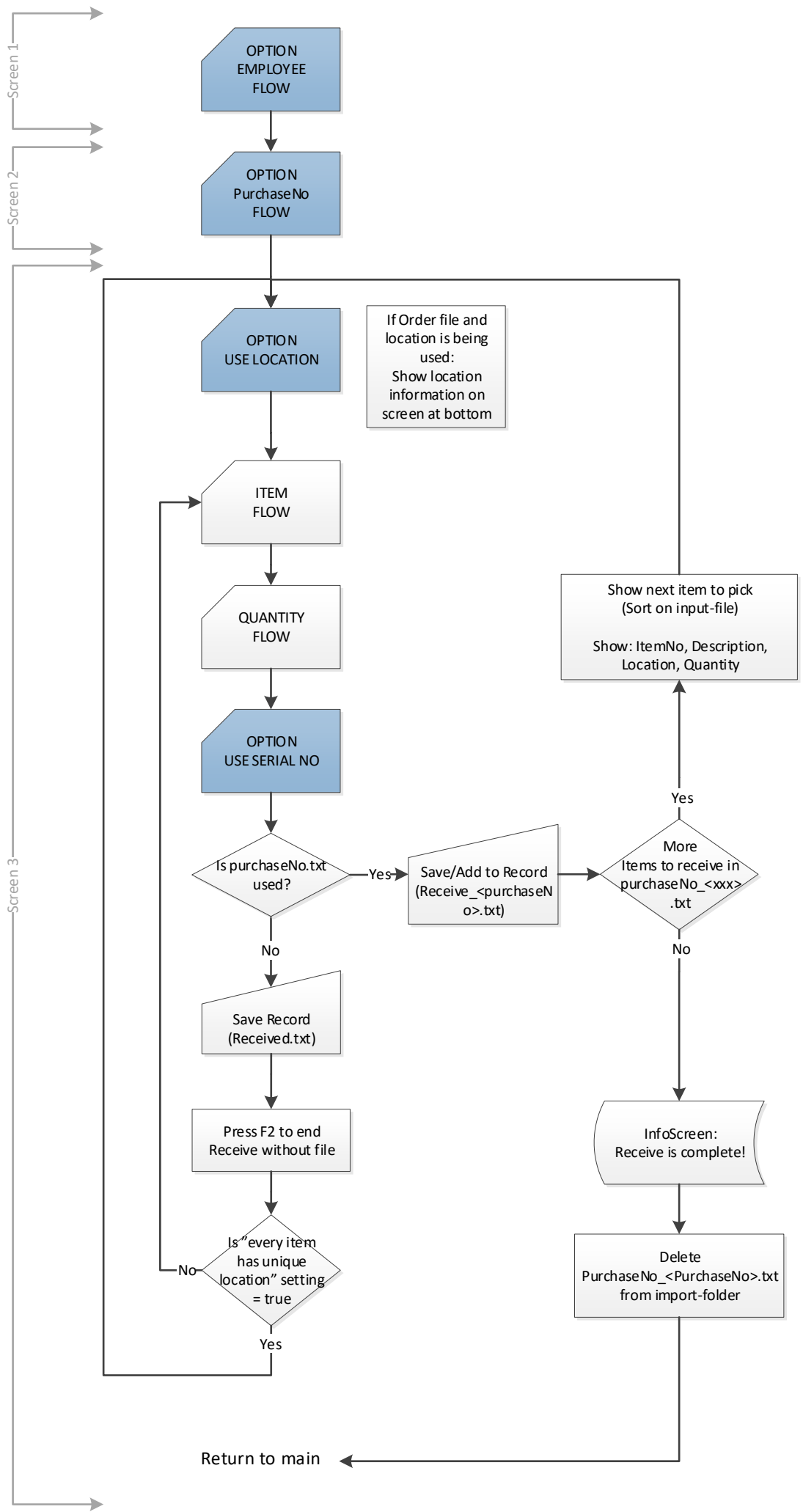
Restock



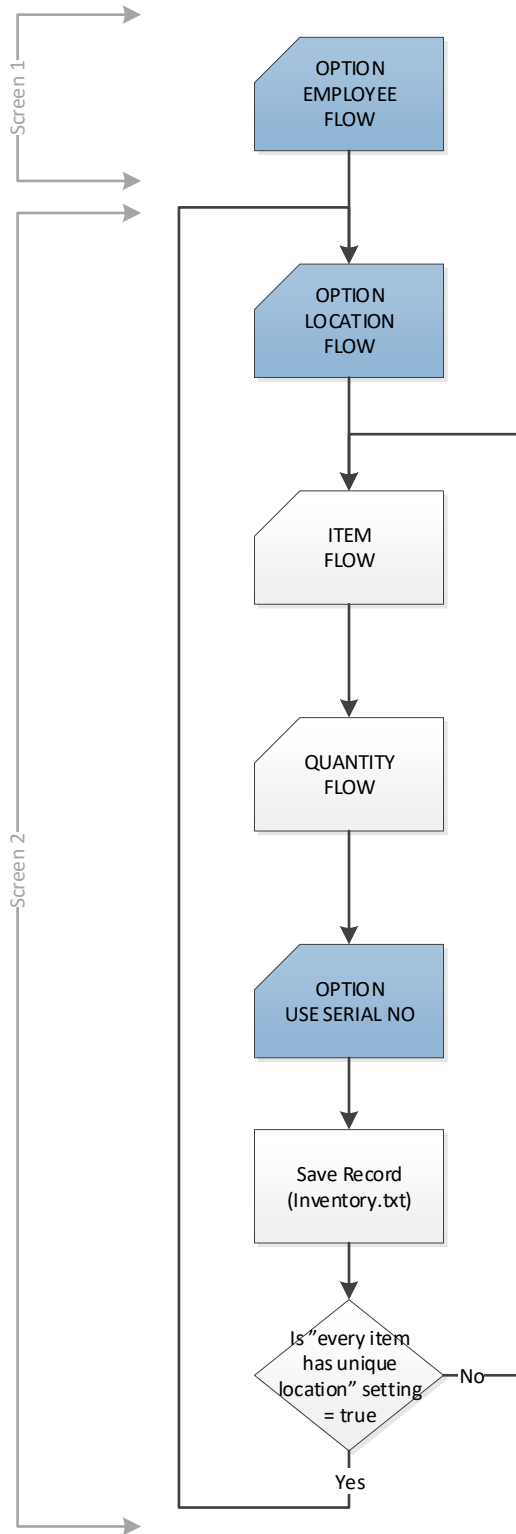
PICK FLOW



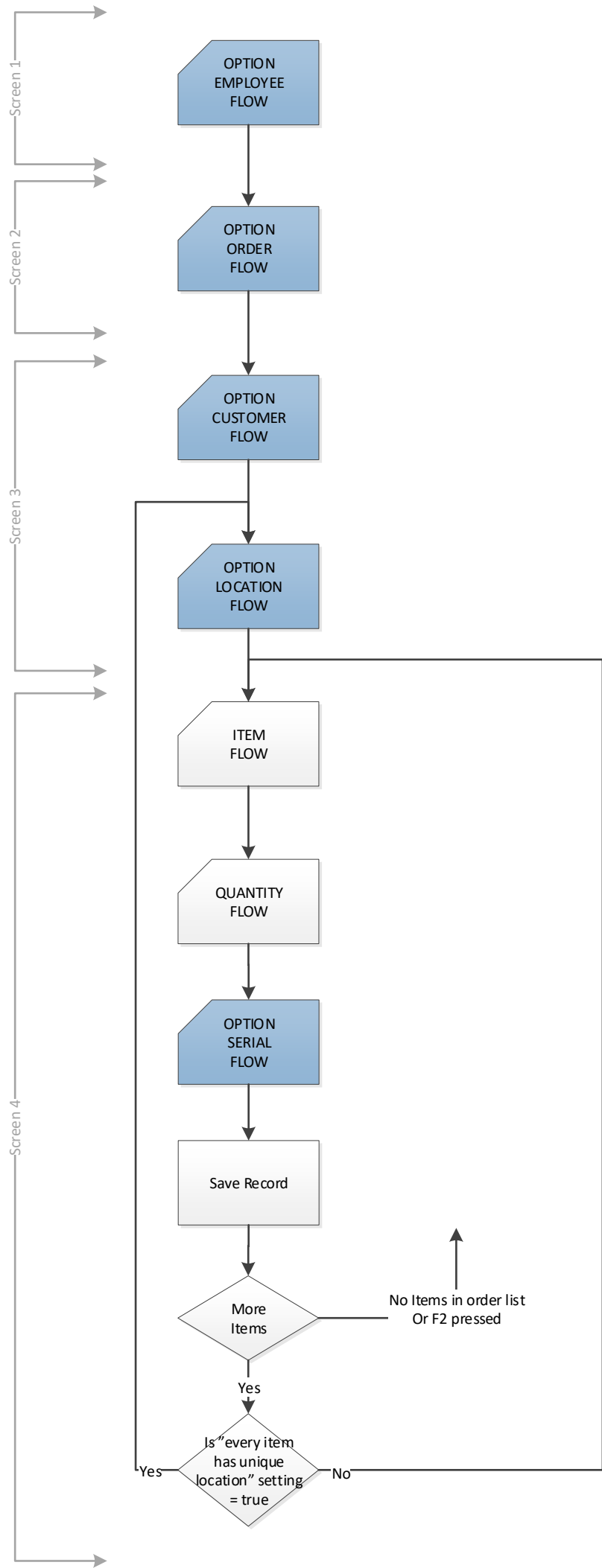
RECEIVE FLOW



INVENTORY FLOW



CONSUME FLOW



LOOK UP FLOW

